

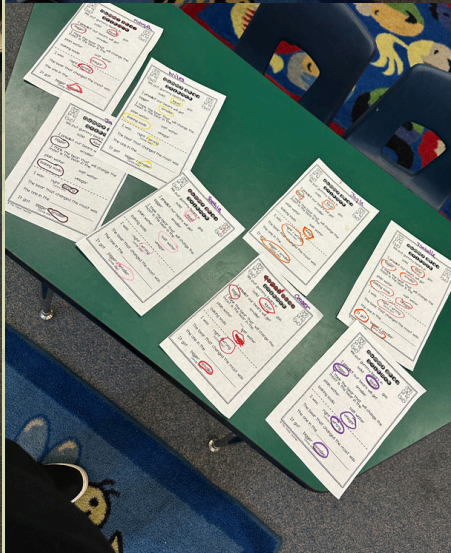
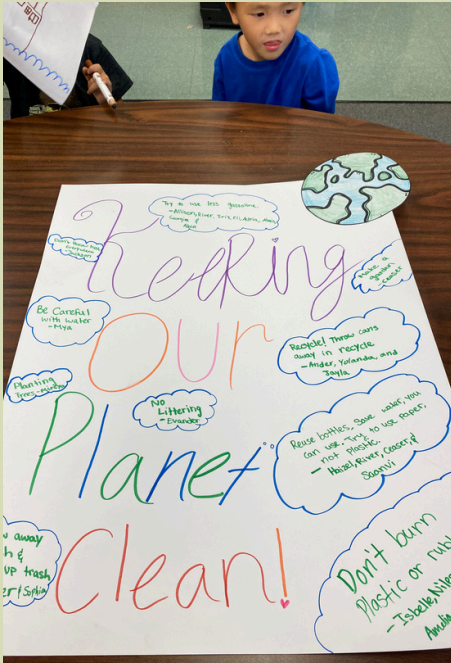
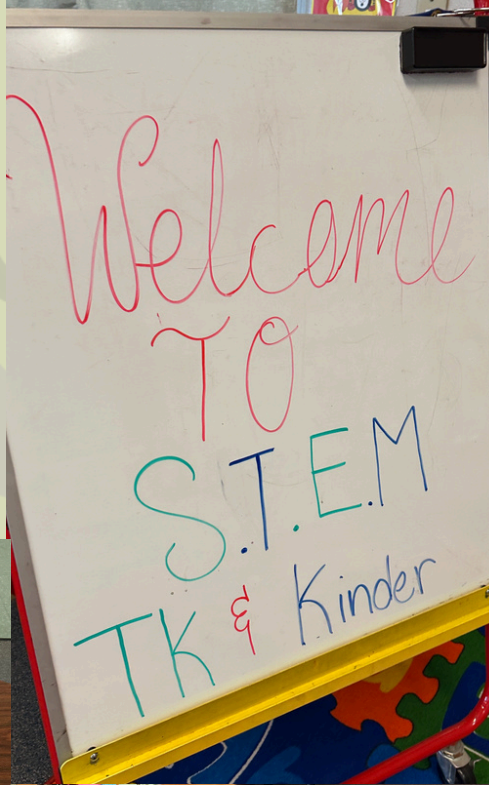


Empowering  
Possibilities  
Unlimited, Inc.

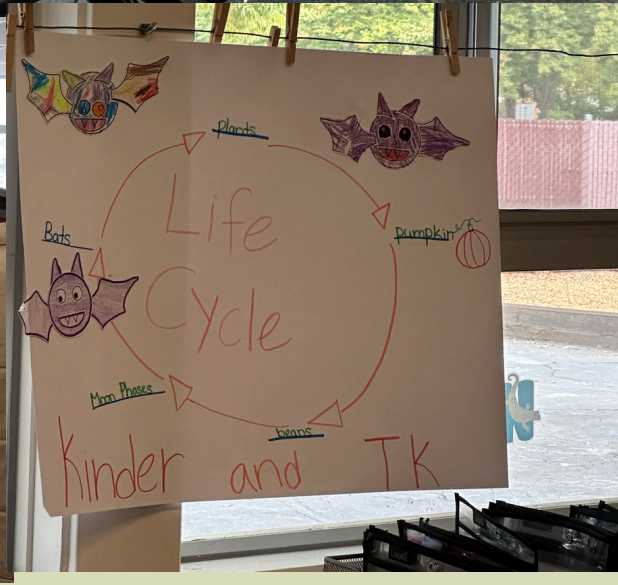
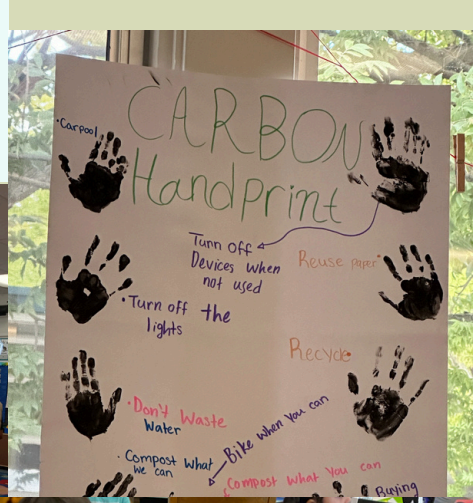
# WEEKLY REPORT

OCTOBER 14-18 2024

**THIS WEEK WAS THE FAMILY ENGAGEMENT NIGHT**



# KIDNER FAMILY NIGHT



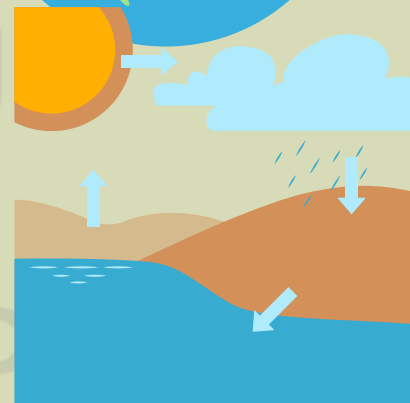
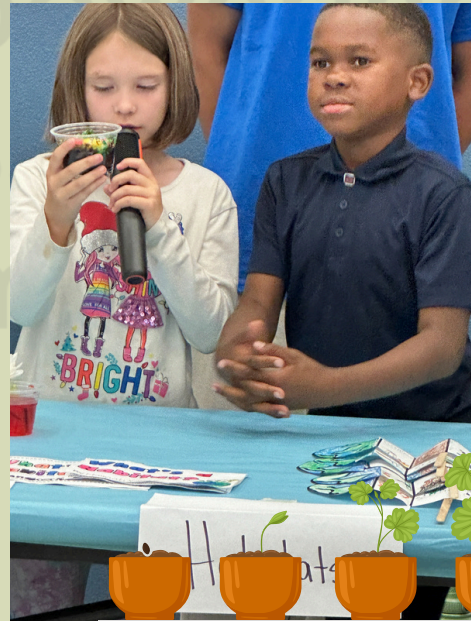
# 1ST:

## STUDENTS PRESENTED THEIR PROJECTS FOR THE STEM SHOWCASE



# 2ND:

## STUDENT PRESENTED THEIR PROJECTS TO THE FAMILY



# 3RD:

## STUDENTS CREATING SOME HALLOWEEN SNACKS



# 4TH:

## STUDENT PRESENTED THEIR STEM PROJECTS TO THEIR FAMILIES AND SOME HALLOWEEN ART WORK



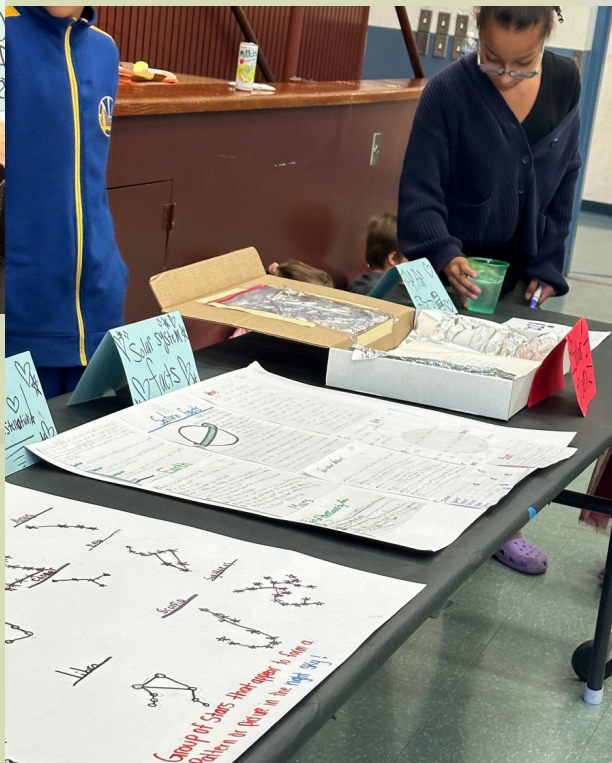
# 5TH:

## STUDENTS PRESENTED A VARIETY OF STEM PROJECTS



# 6TH:

## STUDENTS PRESENTED THEIR PLANET PROJECT





# **FLAG FOOTBALL SCHEDULE**

**@Will C Wood Middle School**

**October 23,2024**

**Field 1 @4pm**

**ANY QUESTION CONTACT  
PROGRAM MANAGER  
AFTER-SCHOOL  
MS.ESTEFANI  
@916-832-1667**



*CaliDanza*  
DANCE COMPANY  
Presents

# Folklorico Dance Class



Mondays K- 3rd : 2:30pm to 3:30pm  
4th-6th graders: 3:30pm to 4:30pm  
Outside of room 22

# STATISTICS

ADA GOAL	90	
CURRENT NUMBER OF STUDENTS ENROLLED	148	
NUMBER OF NEW STUDENTS		
NUMBER OF STUDENTS ON WAITLIST	8	
NUMBER OF STUDENTS SERVED - DAY 1 (MON)	117	130%
NUMBER OF STUDENTS SERVED - DAY 2 (TUES)	123	136%
NUMBER OF STUDENTS SERVED - DAY 3 (WED)	121	134%
NUMBER OF STUDENTS SERVED - DAY 4 (THURS)	118	131%
NUMBER OF STUDENTS SERVED - DAY 5 (FRI)	112	124%
ADA FOR THE WEEK (%)	110%	

SYLLABI TASK	WEEKLY HRS	CUMULATIVE HOURS
HOMEWORK	4	41
COMMON CORE (MLA & MATH)	4	41
SOCIAL EMOTIONAL	3	51
RECREATION	3	37
ENRICHMENT - CLUBS	2	48

ADA CUMULATIVE  
NUMBER OF  
STUDENTS:591

ADA CUMULATIVE  
PERCENTAGE:655

UPDATED BY:  
ESTEFANI RAMIREZ

PM VERIFIED  
UPDATE:ER

DAY SERVED:5

